

Description	Page
Product index	1-2
4 brands under 1 roof	1-4
Systems solutions	1-5

Alpha-Numerical Product Index

1

Product Series	Description	Page
2F1C	2 Way Variable Flow Control Valve	5-15
4D01	Denison DC Valve	2-7
4D02	Denison DC Valve	2-37
4D02V	Denison Pilot Operated DC Valve	2-59
4D03, 4D06	Denison Pilot Operated DC Valve	2-59
4DP01	Denison Direct Operated Prop. DC Valve	3-9
4DP02	Denison Direct Operated Prop. DC Valve	3-21
4DP02V	Denison Pilot Operated Prop. DC Valve	3-35
4DP03, 4DP06	Denison Pilot Operated Prop. DC Valve	3-35
4VP01	Denison Direct Operated Prop. Relief Valve, Subplate Mount.	4-43
A	Subplate	12-8
A102	Subplate	12-12
C	2 Way Slip-In Cartridge Valve	8-5
C*A	2 Way Slip-In Cartridge Valve, Cover w/o Auxiliary Functions	8-8
C*B	2 Way Slip-In Cartridge Valve, Cover w. Stroke Limiter	8-9
C*C	2 Way Slip-In Cartridge Valve, Cover f. Pilot System Mount.	8-11
C*D, C*E	2 Way Slip-In Cartridge Valve, Cover w. Press. Relief Valve	8-14
C, 9C	Check Valve	10-45
C10 D*C	2 Way Slip-In Cartridge Valve	8-95
C18 D*C	2 Way Slip-In Cartridge Valve	8-99
C18 DB	2 Way Slip-In Cartridge Valve	8-103
C1DB	2 Way Cartridge Valve	8-83
C4V	Denison Check Valve	6-15
C4V	Denison Hydr. Pilot Operated Check Valve	6-31
C5P	Denison Pilot Operated Check Valve	9-69
C5V	Denison Direct Operated Check Valve	9-65
CB	Cartridge Manifold Block	12-33
CE	2 Way Slip-In Cartridge Valve	8-5
CM	Direct Operated Check Valve	7-63
Compax 3F	Servo Drive	11-23
CP, 9CP	Pilot Operated Check Valve	10-47
CPOM	Pilot Operated Check Valve	7-73
CPS	Pilot Operated Check Valve	6-19
CS	Check Valve	6-9
CS	Sandwich and Cover Plate	12-29
D*1FH	Pilot Operated Prop. DC Valve	3-59
D*1FP	Pilot Operated Servo Prop. DC Valve	3-93
D*1FT	Pilot Operated Prop. DC Valve	3-51
D*1FW	Pilot Operated Prop. DC Valve	3-27
D*1VW	Pilot Operated DC Valve	2-59
D1DL, D3DL	DC Valve	2-87
D1FB	Direct Operated Prop. DC Valve	3-3
D1FP	Direct Operated Prop. DC Valve	3-69
D1FP*S	Direct Operated Prop. DC Valve	3-75
D1FT	Direct Operated Prop. DC Valve	3-45

Product Series	Description	Page
D1MW	DC Valve	2-31
D1SE	3/2 Way Seated Type DC Valve	2-3
D1VP	Pilot Operated DC Valve	2-75
D1VW	DC Valve	2-7
D1VW	DC Valve, 8 Watt	2-15
D1VW	DC Valve, Inductive Pos. Control	2-21
D1VW	DC Valve, Explosion Proof	2-27
D3DP	Pilot Operated DC Valve	2-75
D3FB	Direct Operated Prop. DC Valve	3-15
D3FP*0	Direct Operated Prop. DC Valve	3-81
D3FP*3	Direct Operated Prop. DC Valve	3-87
D3MW	DC Valve	2-53
D3W	DC Valve	2-37
D3W	DC Valve, Inductive Pos. Control	2-47
D31DW	Pilot Operated DC Valve	2-59
D4L, D9L	DC Valve	2-87
D4P, D9P, D11P	Pilot Operated DC Valve	2-75
D4S	Denison Direct Seat Valve, Subplate Mount.	6-21
D4S	Denison Direct Seat Valve, Pipe Mount.	10-27
D51*	Cover Plate	12-31
D5S	Denison Direct Seat Valve	9-35
DSDU	Pilot Operated Press. Relief Valve	4-39
DUR*L06	2 Way Prop. Flow Control Valve	5-21
EVSA	Direct Operated Press. Relief Valve	4-19
EX-M03	Test Unit	11-41
EX-N08	Power Supply	11-39
F, 9F	Throttle Check Valve	10-41
F5C	Denison Prop. Throttle Valve	9-49
FM	Throttle Check Valve	7-49
FS	Throttle Check Valve	5-7
GFG2	2 Way Flow Control Valve	5-11
H06	Sandwich Plate	12-25
LCM	Press. Compensator	7-43
MSP	Multi-Station Manifold	12-13
MV, 9MV	Needle Valve	10-37
MVI	Cartridge-Type Needle Valve	5-3
N, 9N	Needle Valve	10-39
NS	Needle Valve	5-5
PADA	Adaptor Plate	12-23
PC*MS	Flow Control Valve	5-9
PCD00A-400	E-Module for Prop. Press./Flow Control Valve	11-11
PCM, 9PCM	Flow Control Valve	10-43
PE*W	Pilot Operated Prop. Press. Reducing Valve	4-109
PID00A-40*	E-Module for Closed Loop Control	11-19
PR	Pilot Operated Press. Reducing Valve	4-97
PRDM	Direct Operated Press. Reducing Valve	7-19
PRM	Pilot Operated Press. Reducing Valve	7-25

Alpha-Numerical Product Index

1

Product Series	Description	Page
PRPM	Pilot Operated Prop. Press. Reducing Valve	7-39
PSB	Press. Switch	12-39
PWD00A-400	E-Module for Prop. Valve	11-3
PWDXXA-40*	E-Module for Prop. Valve	11-7
PZD00A-40*	E-Module for Command Signal Processing	11-15
R,RS	Pilot Operated Press. Relief Valve, Subplate Mount.	4-27
R,RS*E	Pilot Operated Press. Relief Valve, Slip-In Cartridge	8-27
R1E02	Denison Direct Operated Press. Relief Valve	4-23
R4R	Denison Pilot Operated Press. Reducing Valve	4-97 10-9
	- Subplate Mount.	
	- Pipe Mount.	4-109 10-21
R4R*P*	Denison Pilot Operated Prop. Press. Relief Valve	
	- Subplate Mount.	4-109 10-21
	- Pipe Mount.	
R4S	Denison Pilot Operated Sequence Valve	4-87
R4U	Denison Unloading Valve	4-77
R4V	Denison Pilot Operated Press. Relief Valve	4-27 10-3
	- Subplate Mount.	
	- Pipe Mount.	4-61
R4V	Denison Prop. Press. Relief Valve, OBE, Subplate Mount.	
R4V*P*	Denison Pilot Operated Prop. Press. Relief Valve	4-53 10-15
	- Subplate Mount.	
	- Pipe Mount.	9-53
R5A	Denison 2-Port Press. Compensator	
R5P	Denison 3-Port Compensator	9-57
R5R	Denison Pilot Operated Press. Reducing Valve	9-19
R5R*P*	Denison Pilot Operated Prop. Press. Reducing Valve	9-31
R5S	Denison Pilot Operated Sequence Valve	9-15
R5U	Denison Pilot Operated Press. Unloading Valve	9-9
R5V	Denison Pilot Operated Press. Relief Valve	9-3
R5V*P*	Denison Pilot Operated Prop. Press. Relief Valve	9-25
R6V	Denison Pilot Operated Press. Relief Valve, Subplate Mount.	4-27
R6V	Denison Pilot Operated Press. Relief Valve, OBE, Subplate Mount.	4-61
R6V*P*	Denison Pilot Operated Prop. Press. Relief Valve, Subplate Mount.	4-53
RDM	Direct Operated Press. Relief Valve	7-3
RE*E*T	Prop. Press. Relief Valve, OBE, Slip-In Cartridge	8-37

Product Series	Description	Page
RE*E*W	Prop. Press. Relief Valve, Slip-In Cartridge	8-33
RE*T	Prop. Press. Relief Valve, OBE, Subplate Mount.	4-61
RE*W	Pilot Operated Prop. Press. Relief Valve, Subplate Mount.	4-53
RE06M*T	Direct Operated Prop. Press. Valve, Subplate Mount.	4-47
RE06M*W	Direct Operated Prop. Relief Valve, Subplate Mount.	4-43
RH	Hydr. Pilot Operated Check Valve	10-49
RK,RB	Threaded Check Valve	6-5
RM	Pilot Operated Press. Relief Valve	7-7
S	Pilot Operated Sequence Valve	4-87
SCPSD	Electronic Press. Switch	12-45
SD500	Press. Intensifier	12-51
SPC	Denison Press. Compensator	7-45
SPD	Subplate	12-3
SPP	Subplate	12-9
SPR	Check Valve	6-15
SPV, SPZ	Check Valve	6-13
SPZBE	Check Valve	6-11
SSR	Shuttle Valve	6-3
SVLA	Check Valve, Hydr. Pilot Operated	8-20
SVLB	Hydr. Pilot Operated Check Valve, Slip-In Cartridge	8-85
SVLE	Hydr. Pilot Operated Check Valve, Subplate Mount.	6-31
TDA	Prop. Throttle Valve	8-69
TDL	Prop. Throttle Valve	8-77
TEA	Prop. Throttle Valve w. Shut-Off Valve	8-73
TEH	Throttle Valve w. Shut-Off Valve	8-65
UR, US	Unloading Valve, Subplate Mount.	4-77
UR*E, US*E	Unloading Valve, Slip-In Cartridge	8-41
VB	Direct Operated Press. Relief Valve	4-7
VBY	Pilot Operated Press. Relief Valve	4-13
VBY*K	Prop. Press. Relief Valve	4-71
V-DAFA	Unloading Valve	8-18/19
V-DNLA	Press. Sequence Valve	8-19
V-DSBA	Preload Valve	8-17/18
V-DSDA	Press. Relief Valve	8-16
V-ZUDB	Press. Relief Valve	8-16/17
VM	Direct Operated Press. Reducing Valve	4-91
VMY	Pilot Operated Prop. Reducing Valve	4-101
VS	Direct Operated Press. Relief Valve	4-3
WM	Press. Gauge Selector Valve	12-37
ZDR	Denison Press. Reducing Valve	7-33
ZDV	Denison Press. Relief Valve	7-13
ZRD	Denison Throttle Valve w. Check	7-57
ZRE	Denison Pilot Operated Check Valve	7-79
ZRV	Denison Direct Operated Check Valve	7-69
ZSRA / ZSRB	Shuttle Valve	8-20

Parker develops superior products. Over the years we have added many market leading lines in order to provide you with the best offering in the world:

Towler was founded in 1866 as a pioneer in press hydraulics at very high pressures. The design of a range of slip-in cartridges for manifolds brought unlimited flexibility into hydraulic circuits and enhanced hydraulics in many applications. A wide range of proportional valves was developed from pressure controls over directional controls to fast acting cartridge valves.

Parker was founded in 1918 and started with hydraulics for aircrafts. The Colorflow flow and pressure valves, manually adjustable with visual setting control, were a revolutionary offering for the industrial market, followed by various lines of solenoid operated directional control valves. New on the market: wet solenoids for leak-free hydraulics.

Denison was founded in 1931 and another pioneer in press hydraulics. They were the first to introduce a seat-type pilot operated cartridge relief valve to the market and set the trend for all manufacturers. The valve is still unbeaten in its ease of use and performance in all applications. Various housing options are successfully used in all market segments.

Hydraulik Ring was formed in 1967 as a dedicated manufacturer of high precision hydraulics for an association of German machine tool makers. Their product strength was precise flow control in open or closed loop applications, high performance pressure control and pressure intensification for clamping.

This catalogue contains the best industrial valves of these brands. It is an outperforming and full range of industrial valves for any kind of application. In order to allow our new customers from the latest line addition to carry on with model codes in existing parts lists we show some of the valves under the Denison brand and model code in parallel to the Parker brand and model code.

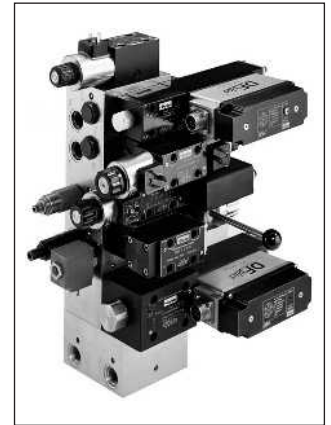
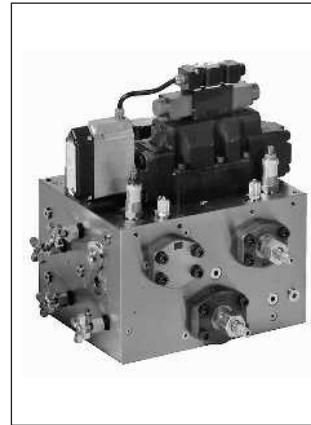
Dr. Gerd Scheffel
General Manager

Parker is more than a supplier of excellent components. Together with our customers, we develop innovative systems solutions. In this industrial valves catalogue, we would like to point out to you our special competence in industrial control units. Our experienced, highly motivated team answers technical needs with complete, sound solutions.

Our performance spectrum comprises a complex understanding of the job, project management, design, and production, including final tests of control units on our modern, automated test beds. In addition we offer compact hydraulic axis controls.

When you entrust us with your system requirements, you can rely on getting an optimal solution from the Parker valves program with all components used in accordance with their characteristics. Furthermore you can rely on us taking full responsibility for all our valves, electronics and combined functions within the system.

Parker is strong in customized solutions but we also supply standardized press controls (e.g. certified versions in



nominal sizes NG 06 through NG50) as fully shown in our brochure HY11-3235/UK on Hydraulics for Press Controls.

Contact your Parker representation for information and offerings concerning your hydraulics.



1

This image shows a blank sheet of white paper with horizontal ruling lines. The lines are evenly spaced and run across the width of the page. There are no margins, text, or other markings on the paper.This image shows a full page of blank graph paper. The grid consists of small, equal-sized squares formed by thin, light gray lines. There are no margins, text, or other markings on the page.